

# TransProCalc Help

(an updated version of this manual is maintained at [http://baldwinsoftware.com/tpcalc\\_manual.html](http://baldwinsoftware.com/tpcalc_manual.html) )

[TransProCalc](#) | [googlecode](#) | [wiki](#) | [TransProCalc forum](#)

an updated copy of this manual is maintained at [http://baldwinsoftware.com/tpcalc\\_manual.html](http://baldwinsoftware.com/tpcalc_manual.html)

TransProCalc is a cross-platform tool for managing documents, assignments, and financial data for translation projects. It is distributed under the GNU licence (see ReadMe). This document explains answers the following questions about TransProCalc:

For additional support, visit the [TransProCalc forum](#) or [contact tony](#)

- [How to download and install TransProCalc](#)
  - [How does TransProCalc work](#)
  - How to use TransProCalc
    - [How to track the source documents, and the target languages and translation units of each document](#)
    - [How to track the project components you subcontracted](#)
    - [How to track the project costs, expenses, and income](#)
    - [How to quickly estimate the project financials on the fly](#)
  - [How to troubleshoot TransProCalc](#)
- 

## How to download and install TransProCalc

TransProCalc is a cross-platform tool - it runs on Unix, Mac and Windows. It requires version 8.6 of ActiveTcl to run. To install TransProCalc on your computer, follow the steps listed below.

1. Download ActiveTcl version 8.5 or later.
2. For Windows, install ActiveTcl by running the executable file ActiveTcl8.6.0.0b2.291226-win32-ix86-threaded.exe.
3. For most gnu/linux distributions, tcl can be installed with your usual package manager.
  - debian, ubuntu, etc.: `sudo aptitude install tcl`
  - Fedora: `yum install tcl`
  - Once you have tcl installed proceed.
4. Download the TransProCalc tarball `tpcalc0.8.tar.gz`.
5. Extract the contents of the compressed file to any directory of your choice.
6. For Windows, you can now start using TransProCalc by executing the `tpcalc.tcl` file.
7. For gnu/linux, run the `install.sh` script (in terminal, `cd` to the location of the script, then `./install.sh`).

[Top](#)

---

## How does TransProCalc work

TransProCalc is used through its graphic front-end that works through the following three modules:

- Project Docs
- Project Assignments

- Project Financial

The three modules taken together constitute a single project that can be saved (as a \*.tpc file) and accessed later. The modules are linked to each other. Thus, when you record the document details in Project Docs, some of that information is carried over to the Project Assignments and Project Financial modules. Each module generates a report that can be saved as a text file.

You can also estimate for a project on the fly through a QuickEstimate module. Information entered in the QuickEstimate module cannot be saved.

TransProCalc is developed by [Tony Baldwin](#).

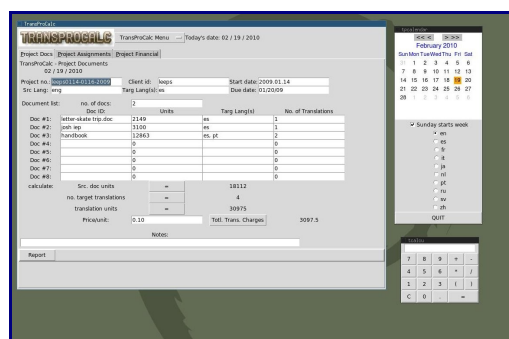
[Top](#)

## Tracking your project documents

The Project Docs page is where you track the number of documents of the project, and the language and translation units of each document. You can print the details (Report button) and also save the information in a file (TransProCalc Menu > Save Project).

To keep a record of your project documents, enter the information in the fields and click the calculation buttons (= button and Totl.Trans.Charges button). For the program to work correctly, do not leave any field, other than the Notes field, blank. For fields that you want to leave empty, type in fillers such as "n/a" or "0". For explanations of some of the fields, read on.

- No. of docs: This is total number of source documents for the project.
- Units: This is the number of units, in each document, that you will charge. This can be words, lines, or pages.
- No. of Translations: This is the number of times the document is to be translated, and corresponds to the number of target languages.
- Src. doc units: This is the total number of translation units in the project.
- Translation units: This is the product of the translation units in the source document and the number of target languages



[project docs](#) | [click to view full size](#)

[Top](#)

## Assigning your projects to subcontractors

The Project Assignments page is where you keep track of the project components you contracted out to other people. If you specified any information on the Project Docs page, some of the information is

carried over to the fields on this page. You can print the details (Report button) and also save the information in a file (TransProCalc Menu > Save Project).

To keep a record of the components you assigned to others, enter the information in the fields and click the calculation buttons (Provn cost, Assigned Units, and Total Prov Cost). For the program to work correctly, do not leave any field, other than the Notes field, blank. For fields that you want to leave empty, type in fillers such as "n/a" or "0". To get the calculations for Assigned Units and Tot Prov Cost, first click all the other calculation buttons. For explanations of some of the fields, read on.

- Docs assigned: This is the document ID of the assigned document.
- Service: This is the type of service that is subcontracted; for example, proof reading, editing, and so on.



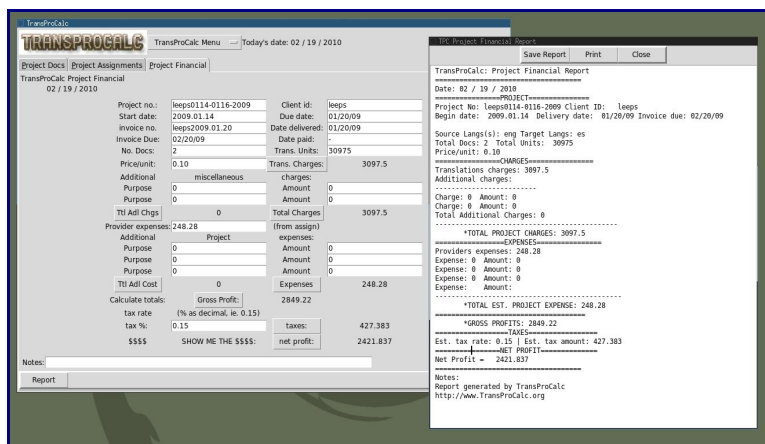
[project assignments](#) | [click to view full size](#)

[Top](#)

## Calculating the financials of your project

The Project Financials page is where you track the project costs, expenses, and income. The information you specified on the Project Docs and Project Assignments page is carried over to the fields on this page. You can print the details (Report button) and also save the information in a file (TransProCalc Menu > Save Project).

To track the money, enter the information in the fields and click the calculation buttons. For the program to work correctly, do not leave any field, other than the Notes field, blank. For fields that you want to leave empty, type in fillers such as "n/a" or "0".



[project financial](#) | [click to view full size](#)

[Top](#)

---

## Creating quick estimates for a project

TransProCalc menu > QuickEstimate

Fill in the fields, click buttons. It's pretty self-explanatory, really.

TransProCalc - Quick Estimate	
TransProCalc	Quick Estimate
word count:	15849
rate/word:	0.12
PRICE:	1901.8799999999999
-----	
pd/out:	0.00
income	1901.8799999999999
taxes:	285.282
-----	
net profit:	1616.598
-----	
hours:	28
WAGE/HR:	67.92428571428572
Close	

[Top](#)

---

## Troubleshooting

If any of the calculations returns a "?", make sure all fields on that screen have an entry. Type in fillers such as "n/a" or "0" in the fields that you want to leave blank. Then recalculate.

If any error message cannot be dismissed by clicking the X icon, to close the message, click OK.

[Top](#)

---

[TransProCalc](#) | [googlecode](#) | [wiki](#) | [TransProCalc forum](#)

[TransProCalc Manual](#) by tony baldwin and anindita basu is licensed under a [Creative Commons Attribution-Share Alike 3.0 United States License](#).

[Based on a work at baldwinsoftware.com.](#)